

## RZ 系列铝电解电容器

### RZ Series Aluminum Electrolytic Capacitor

#### ◆特征

##### Feature

- \* 寿命: 105°C 12000~20000 小时  
Load life: 105°C 12000 ~20000 h
- \* 耐高纹波, 特长寿命  
High ripple current, extreme long
- \* 符合 RoHS  
Compliant to the RoHS Directive

#### ◆应用

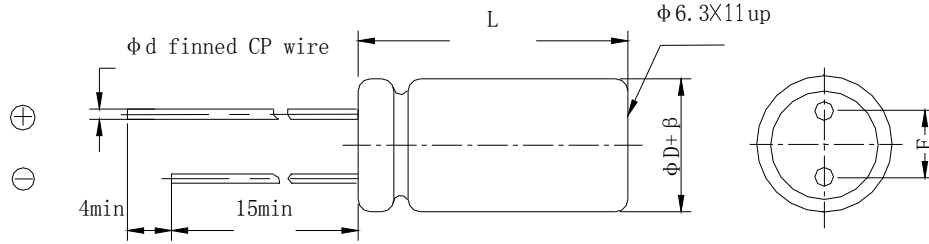
##### Application

- \* 适用于各类开关电源、LED 驱动  
Ideally designed for all kinds of

#### ◆型号表示法

##### Part Number

8 2 2 0 L F

**◆产品结构**
**Product Structure**


(mm)	±0.5			±1.0				
D(mm)	5	6.3	8	10	12.5	16	18	22
F±0.5(mm)	2.	2.5	3.5	5.0		7.5		10.0
d±0.1(mm)	0.5		0.6			0.8		
L(mm)	11,12	12,16	12,16,	16,20,25	16,20,25,30,35	20,25,30,35,40	25,30,35,40	
	L±2.0							

**◆主要特性表**
**Main specifications**

项目 Item	主要特性 Performance Characteristics	
额定工作电压范围 Rated Voltage Range	160~450V.DC	
使用温度范围 Operating Temperature Range	-40°C~+105°C	
标称静电容量范围 Nominal Capacitance Range	6.8~100 μ F	
静电容量允许偏差 Capacitance Tolerance	±20% (M, +25°C, 120Hz)	
漏电流 Leakage Current (25°C)	额定工作电压(V) Rated working voltage	160~450
	漏电流 Leakage current	2 分钟后 $I \leq 0.03CV + 25 (\mu A)$ After 2 min. $I \leq 0.03CV + 25 (\mu A)$
C: 标称静电容量 (μF) Nominal Capacitance in μF V: 额定工作电压 (V) Rated working voltage in V		
损耗角正切 DF Dissipation Factor	额定工作电压(V) Rated working voltage	160~450
	DF(MAX) (25°C, 120Hz)	0.15
当容量值大于 1000μF 时, 每增加 1000μF, DF 值加 0.02 For capacitance of more than 1000μF, add 0.02 for every increase of 1000μF.		

浪涌电压 Surge Voltage	额定工作电压(V) Rated working voltage	160	200	250	350	400	450								
	浪涌电压(V) Surge voltage	200	250	300	400	450	500								
温度特性 Temperature Stability	额定工作电压(V) Rated working voltage	160~250		350~450											
	阻抗比(120Hz) Impedance Ratio	z-40°C/z+25°C		6		12									
高温负荷特性 Load life	<p>在+105°C 环境中施加额定工作电压和最大允许纹波电流 12000~20000 小时后,电容器的性能符合下面要求:</p> <p>After application of rated working voltage with max permissible ripple current specified at +105°C for 12000~20000 hours, capacitors meet the characteristics requirements measured at +20°C listed at below:</p> <p>1、电容量变化率:±20%初始测量值以内 Capacitance change: ±20% initial measured value</p> <p>2、漏电流: 初始规定值 Leakage current: initial specified value</p> <p>3、损耗角正切值 200%倍初始规定值 Dissipation factor: 200% initial specified value</p> <table border="1" data-bbox="1002 949 1362 1164"> <thead> <tr> <th>尺寸 (Size)</th> <th>时间 (Load life)</th> </tr> </thead> <tbody> <tr> <td>D 8</td> <td>12000</td> </tr> <tr> <td>D=10</td> <td>15000</td> </tr> <tr> <td>D 12.5</td> <td>20000</td> </tr> </tbody> </table>							尺寸 (Size)	时间 (Load life)	D 8	12000	D=10	15000	D 12.5	20000
尺寸 (Size)	时间 (Load life)														
D 8	12000														
D=10	15000														
D 12.5	20000														
高温贮存特性 Shelf life	<p>在+105°C环境无负荷放置 1000 小时后, 根据 JIS-C-5101-4, 加额定电压 30min.,常温放置 24~48 小时后测试, 电容器的性能符合下面要求:</p> <p>After leaving capacitors under no load at +105°C for 1000 hours, According to JIS-C-5101-4, apply the rated DC voltage for 30 minutes and store the capacitors under room temperature for 24-48 hours. The capacitors meet the characteristics listed as below:</p> <p>1、电容量变化率:±20%初始测量值以内 Capacitance change: ±20% initial measured value</p> <p>2、漏电流: 初始规定值 Leakage current: initial specified value</p> <p>3、损耗角正切值 200%倍初始规定值 Dissipation factor: 200% initial specified value</p>														

**◆尺寸表、允许纹波、电流纹波电流频率因子**

Dimensions and ripple current and frequency coefficient

纹波电流频率因子

Ripple current frequency coefficient

Freq (Hz)	50 (60)	100 (120)	1K	10K	100K
Coefficient	0.25	0.50	0.80	0.90	1.00

**尺寸表与允许纹波电流**
**Dimensions and ripple current**

WV/V Cap/ $\mu$ F	160		200		250		350		400		450	
	(1)	(2)	(1)	(2)	(1)	(2)	(1)	(2)	(1)	(2)	(1)	(2)
1							8×12	49	8×12	60	8×12	60
1.5							8×16	70	8×16	70	8×16	70
1.8							8×16	70	8×16	75	8×16	72
2.2					8×12	60	10×16	90	10×16	90	10×16	90
2.8			8×12	64	8×12	72	10×16	95	10×16	100	10×16	100
3.3	8×12	68	8×12	70	8×12	80	10×16	100	10×20	115	10×20	118
4.7	8×12	73	10×12	125	10×16	130	10×20	120	12.5×20	145	10×20	148
5.6	8×16	78	8×16	145	10×16	145	12.5×20	150	12.5×20	158	12.5×20	160
6.8	8×16	85	10×16	188	10×16	160	12.5×20	200	12.5×20	160	12.5×20	165
10	10×16	218	10×20	232	10×20	238	12.5×25	220	12.5×25	270	12.5×20	220
15	10×16	325	10×20	325	10×20	314	12.5×25	300	12.5×25	290	12.5×25	290
22	10×20	380	12.5×20	483	12.5×20	465	16×25	438	16×30	400	16×30	405

3d

直径 D(mm) Diameter	高度 L(mm) Length	数量 (只/袋) Quantity (pcs/bag)	袋/盒 bag/box	内箱/外箱 Inner box/outer box	(只/箱) psc/box
8	14-16	500	8	4	16000
8	20	500	6	4	12000
10	9-13	500	6	4	12000
10	14-16	250	8	4	8000
10	17-20	250	8	4	8000
10	25-30	200	8	4	6400
10	31-35	200	6	4	4800
12- 13	16-28	200	6	4	4800
12- 13	30-40	100	8	4	3200
12- 13	45-55	100	6	4	2400
16	15-20	100	8	4	3200
16	21-30	100	6	4	2400
16	31-40	50	10	4	2000
18	15-20	100	6	2	1200
18	25-30	50	8	2	800
18	35-40	50	6	2	600
18	41-50	25	10	2	500
20	25-40	50	10	2	1000
22	25-35	50	5	2	500
22	40	25	10	2	500